



# Child Welfare: Ethnic/Racial Disproportionality and Disparity

Barbara Needell, MSW, PhD  
Center for Social Services Research  
University of California at Berkeley

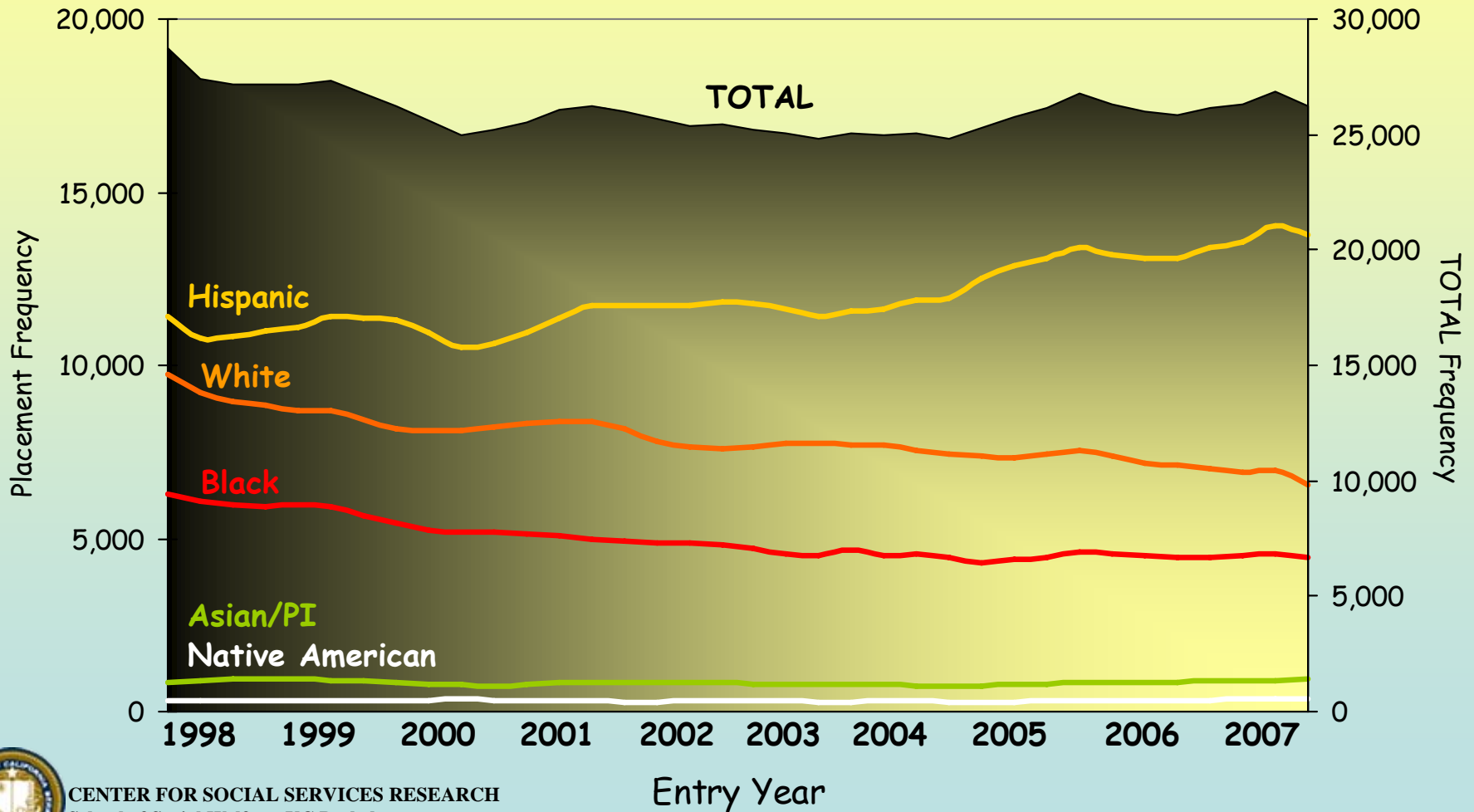
*The Performance Indicators Project at CSSR is supported by the  
California Department of Social Services and the Stuart Foundation*

Presentation developed by Emily Putnam-Hornstein, MSW



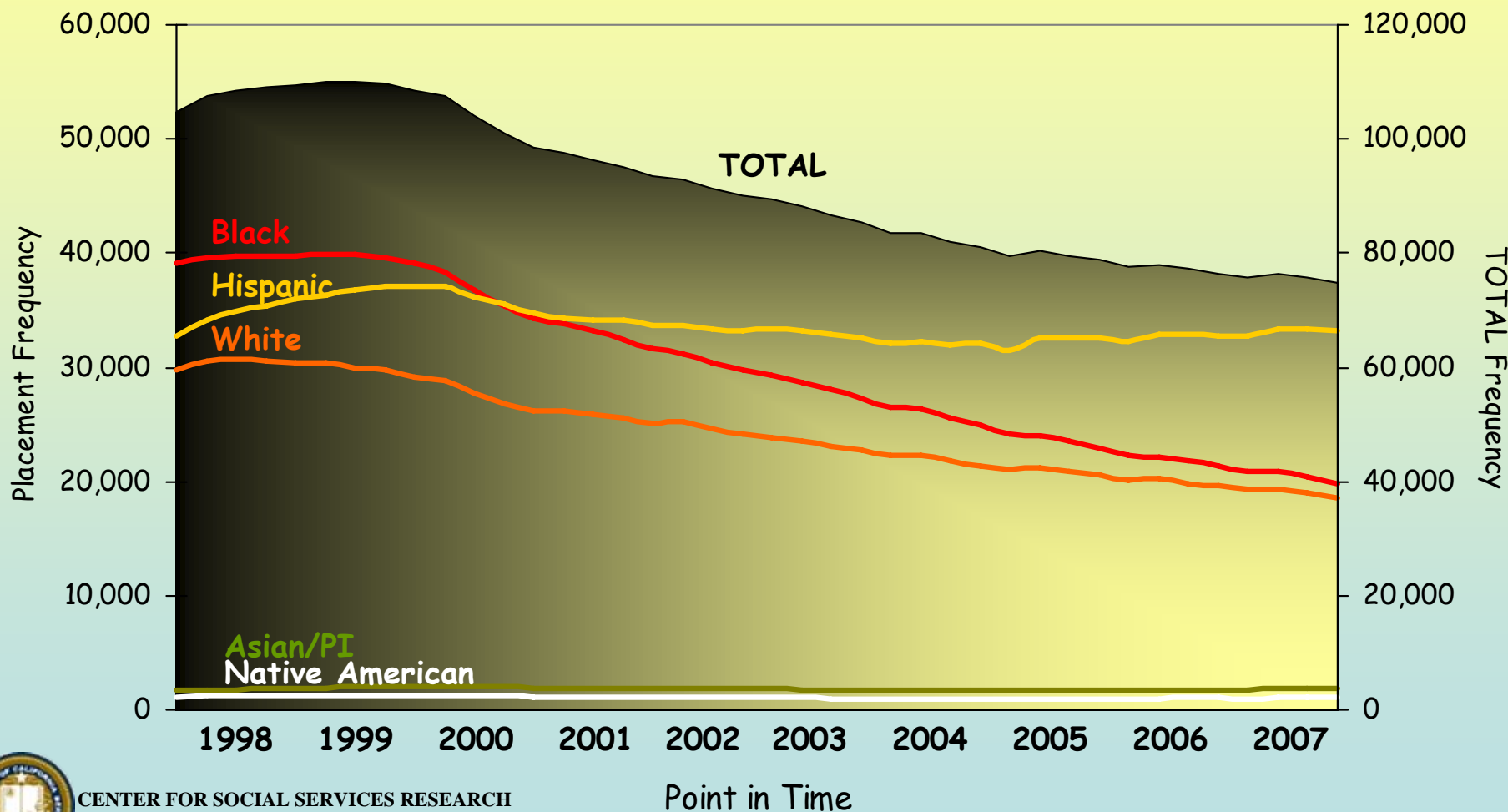


# 1998 to 2007 California: First Entries by Race/Ethnicity (children in care for 8 or more days)



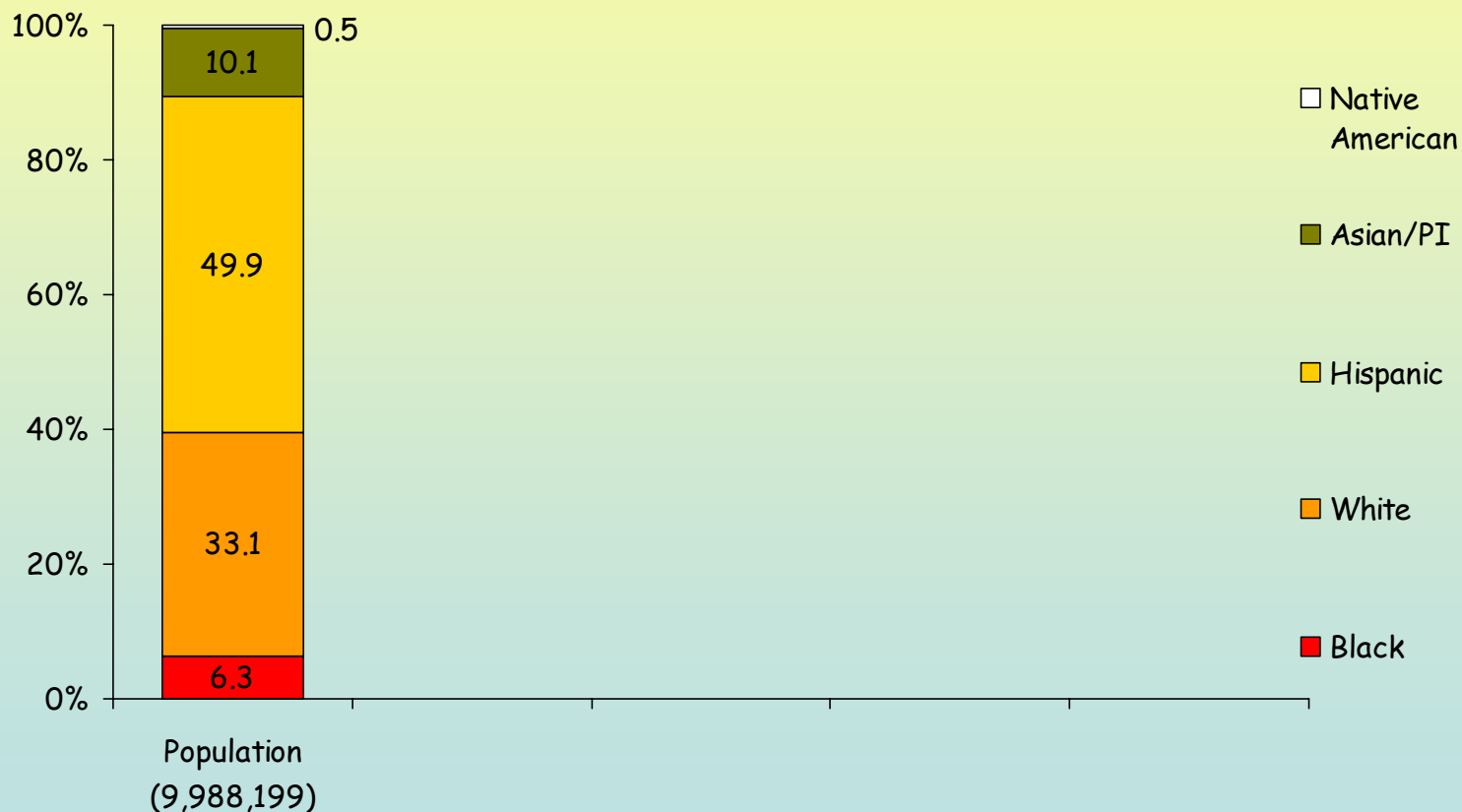


# 1998 to 2007 California: Foster Care Caseload by Race/Ethnicity



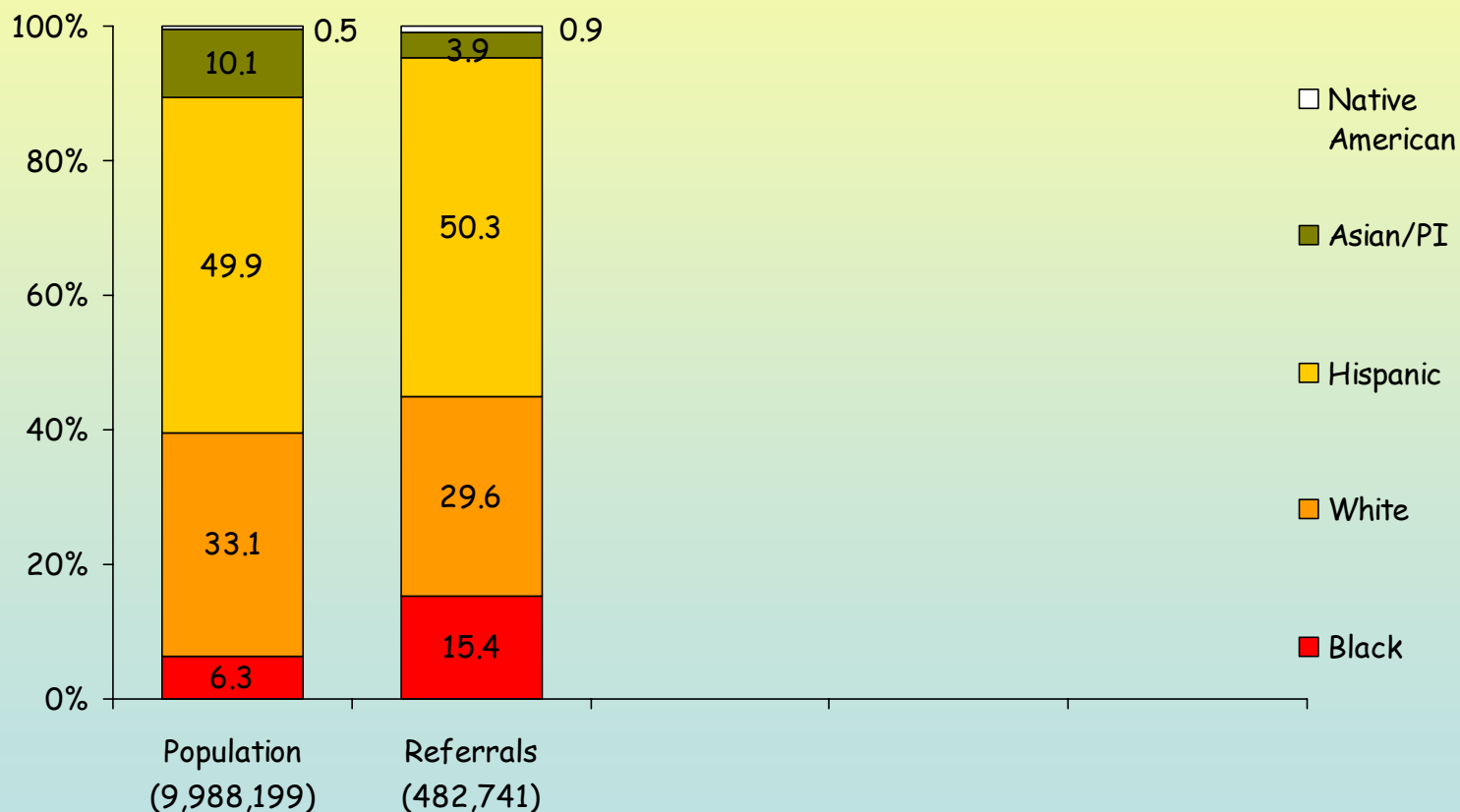


# 2006 California: Ethnicity and Path through the Child Welfare System (Missing Values & Other Race Excluded from % Calculations)



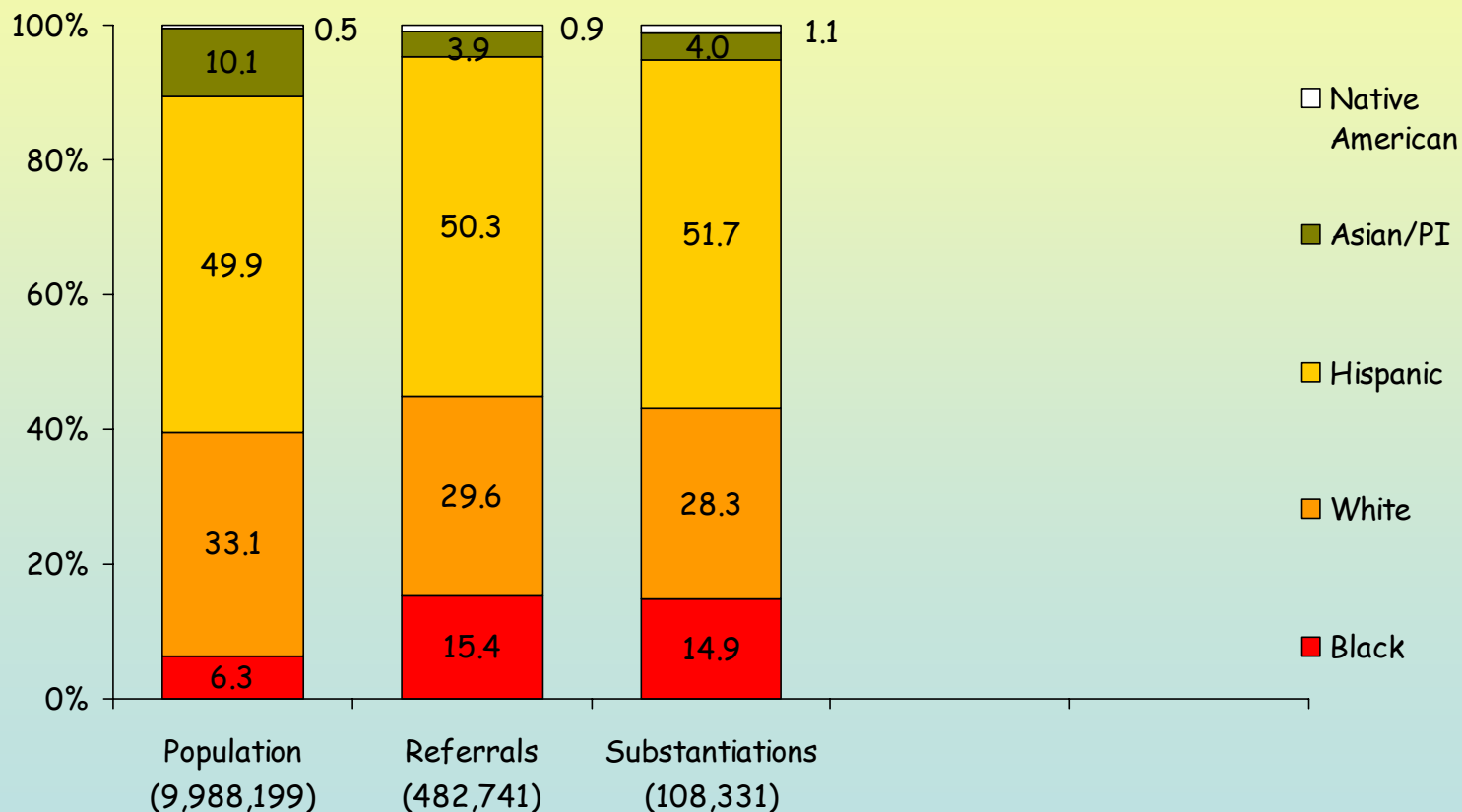


# 2006 California: Ethnicity and Path through the Child Welfare System (Missing Values & Other Race Excluded from % Calculations)



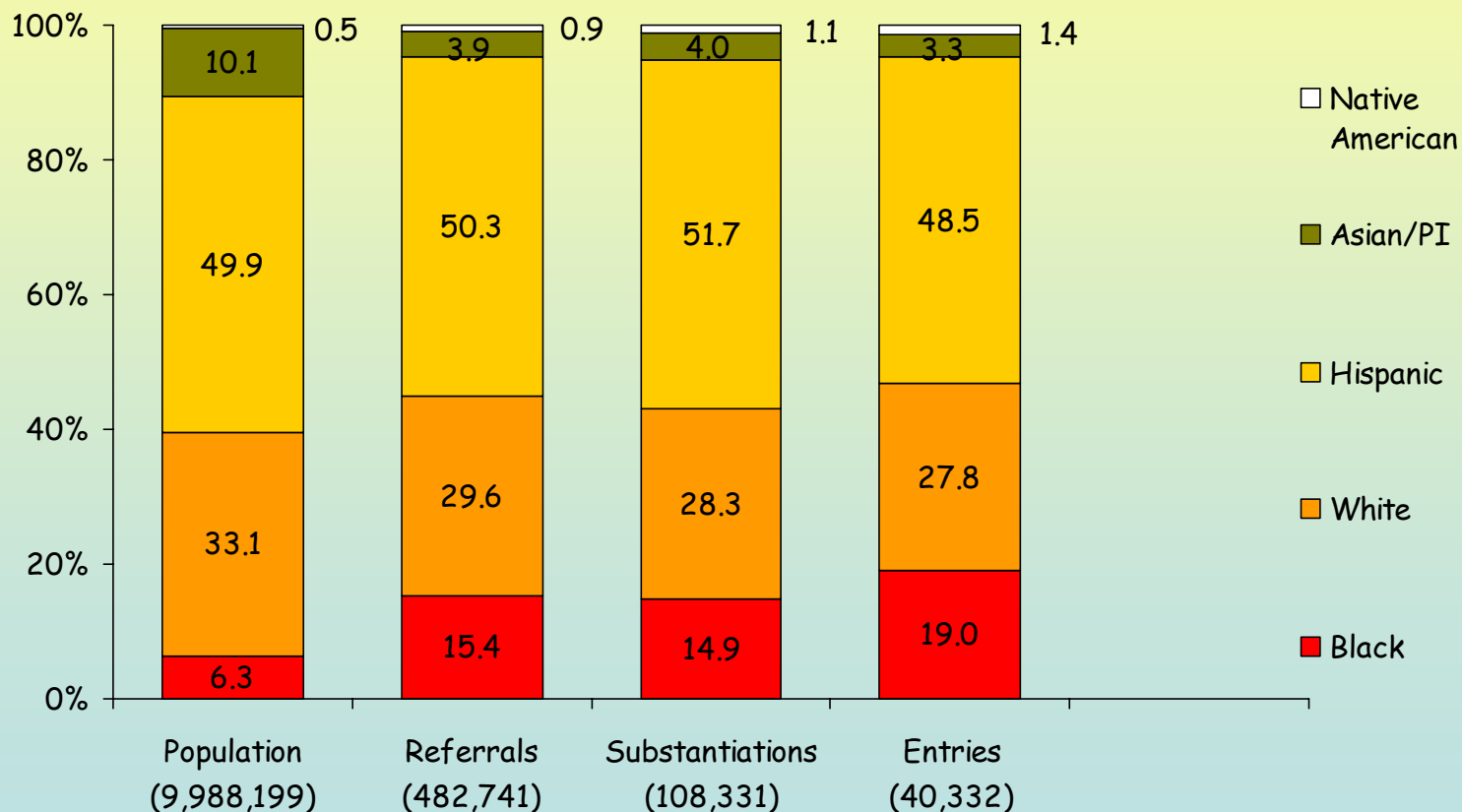


# 2006 California: Ethnicity and Path through the Child Welfare System (Missing Values & Other Race Excluded from % Calculations)



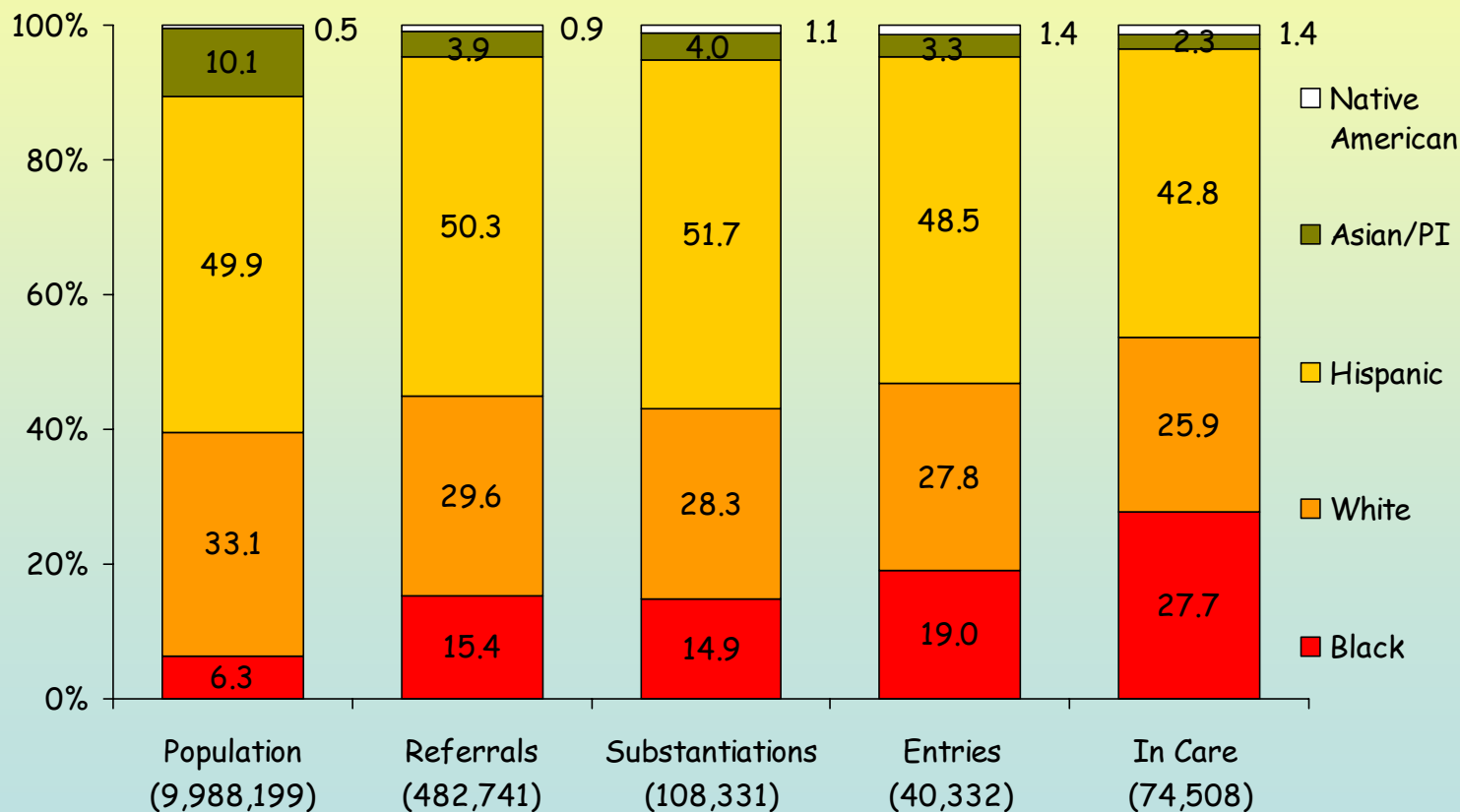


# 2006 California: Ethnicity and Path through the Child Welfare System (Missing Values & Other Race Excluded from % Calculations)





# 2006 California: Ethnicity and Path through the Child Welfare System (Missing Values & Other Race Excluded from % Calculations)





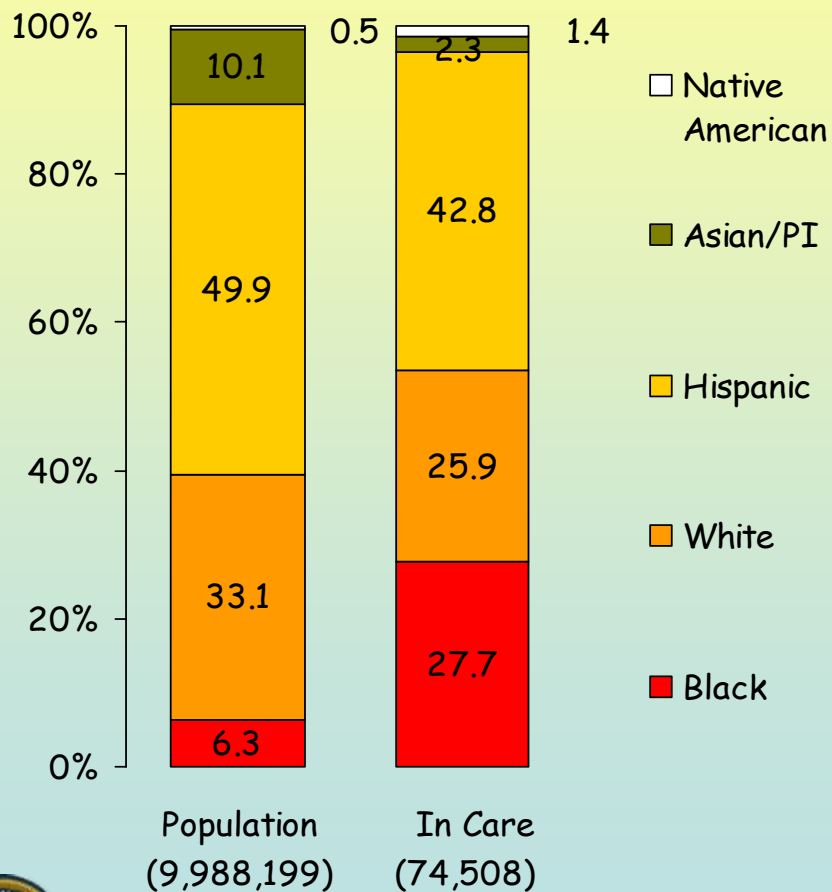
# Definitions...

- Disproportionality: when a group makes up a proportion of those experiencing some event that is higher or lower than that group's proportion of the population
- Disparity: a comparison of one group (e.g., regarding disproportionality, services, outcomes) to another group





# 2006 California: Disparity Index



**Black Disproportionality**

$$\frac{27.7\%}{6.3\%} = 4.40$$

**White Disproportionality**

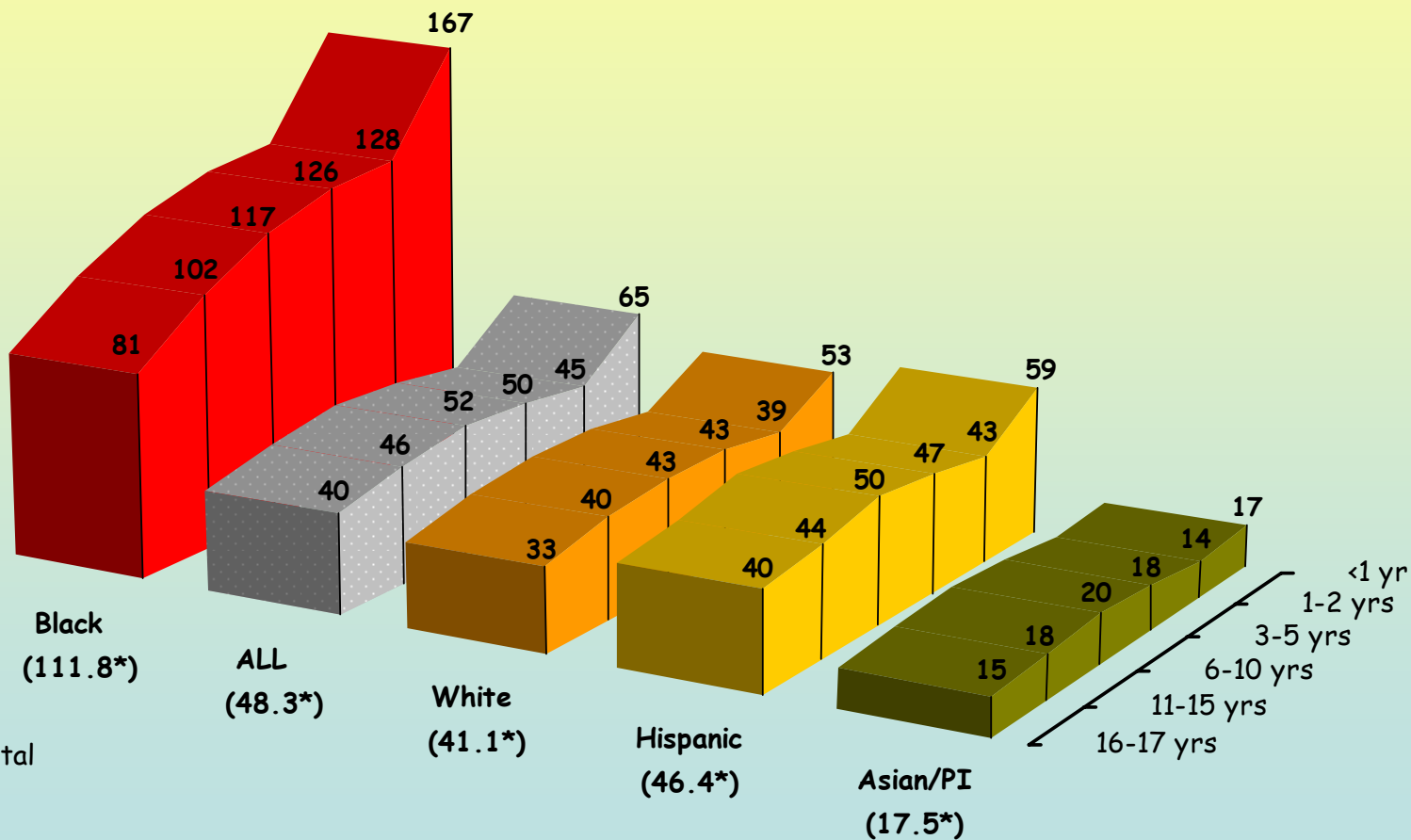
$$\frac{25.9\%}{33.1\%} = 0.78$$

**Disparity Index**

$$\frac{4.40}{0.78} = 5.64$$



# 2006 California: Referrals per 1,000 by Age and Ethnicity

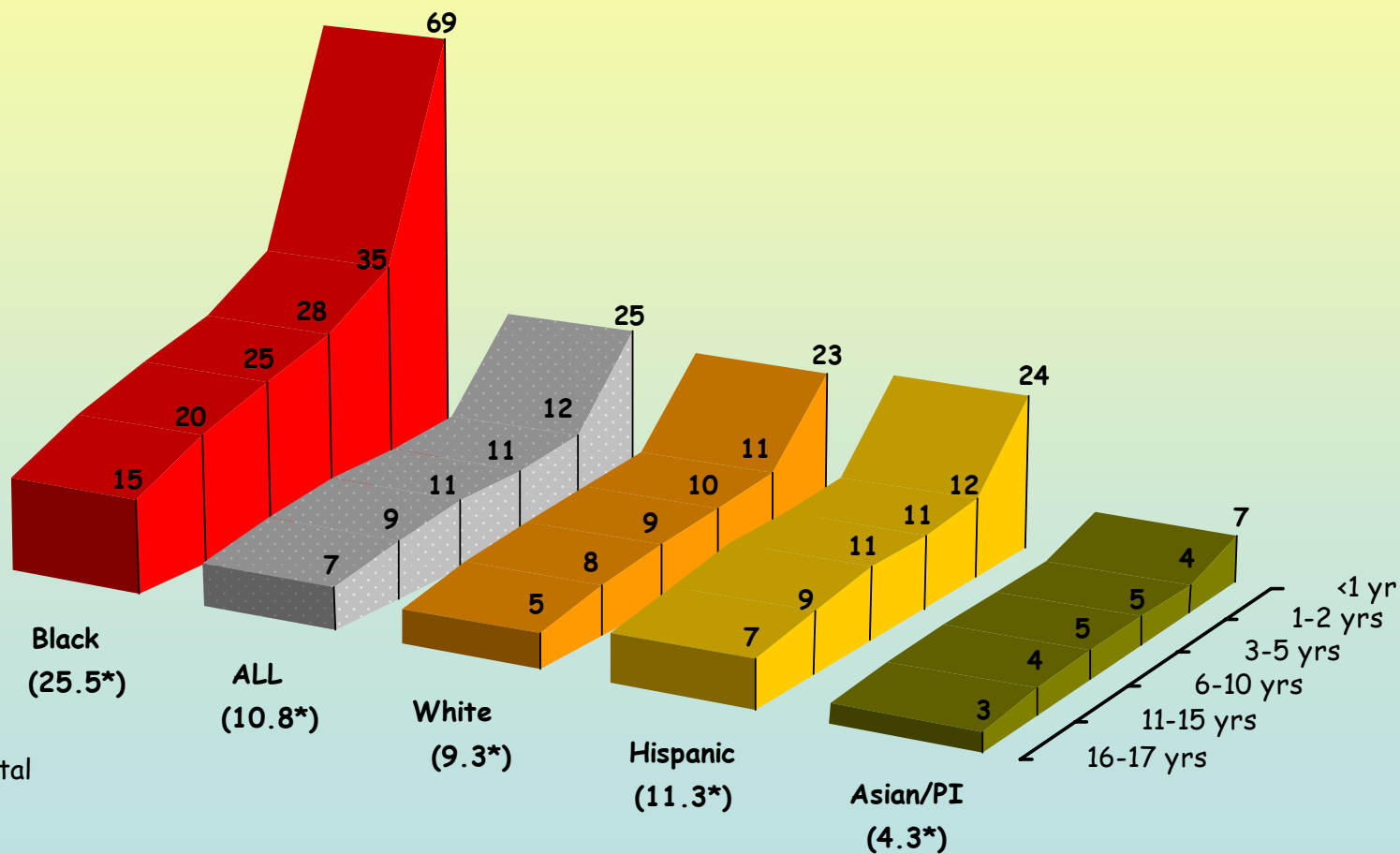


\*Series Total





# 2006 California: Substantiated Referrals per 1,000 by Age and Ethnicity

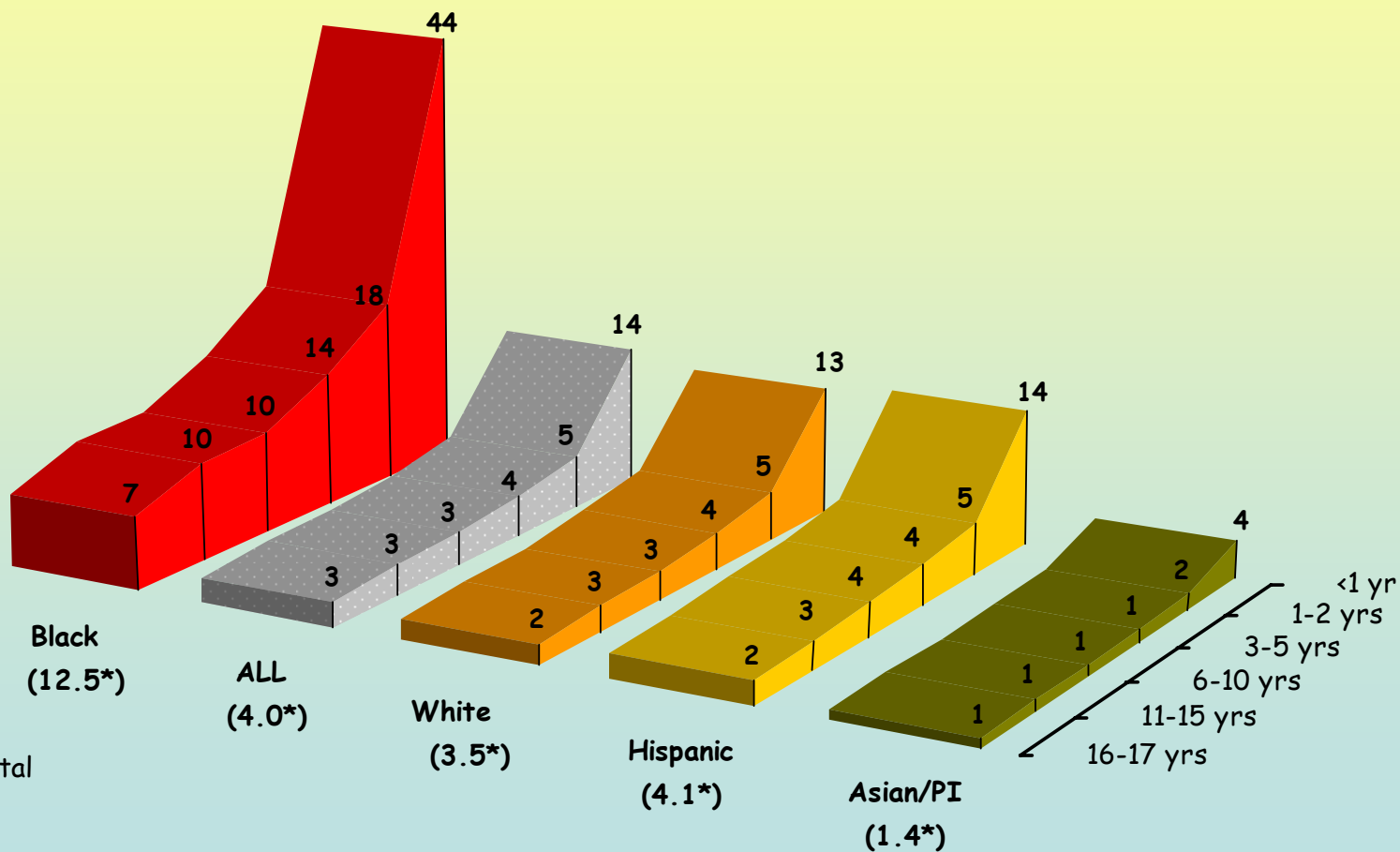


\*Series Total





# 2006 California: Entries to Foster Care per 1,000 by Age and Ethnicity

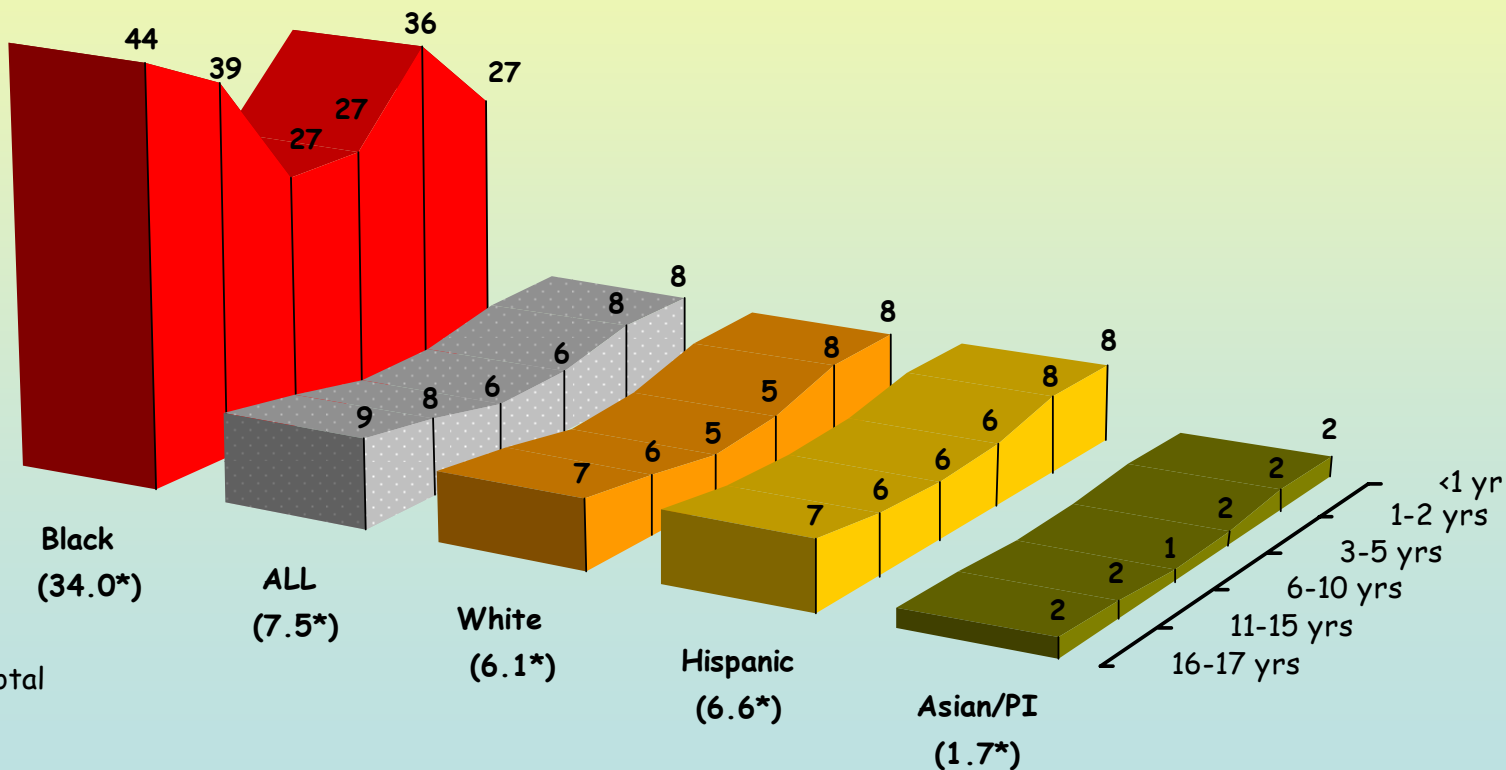


\*Series Total





# 2006 California: Children in Foster Care per 1,000 by Age and Ethnicity



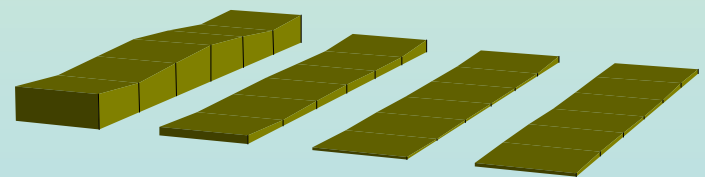
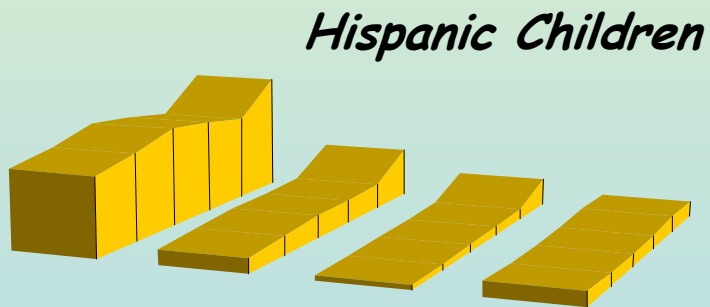
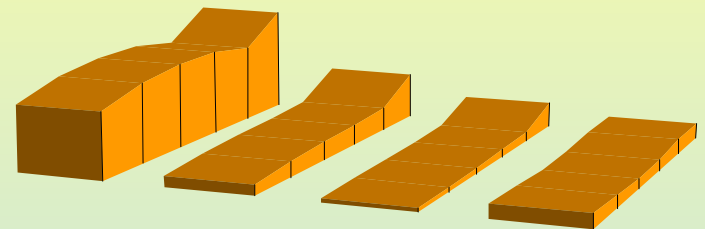
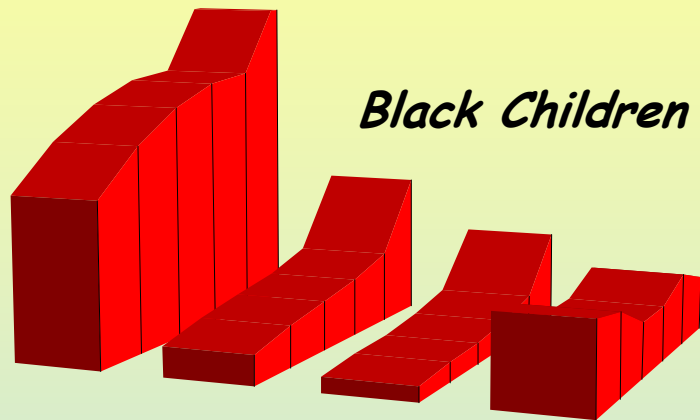
\*Series Total





2006

California:  
Referrals, Substantiated Referrals, Entries, & In Care Rates  
per 1,000 by Age



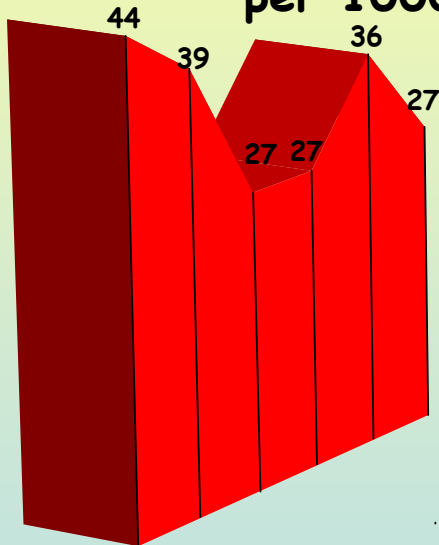


2006

# California:

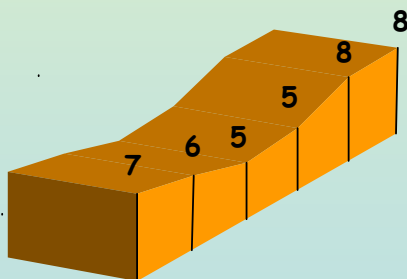
## Children in Foster Care per 1,000 by Age and Ethnicity

### Black Rates per 1000



Black  
(34.0\*)

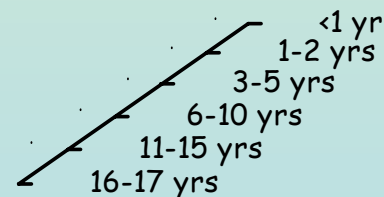
### White Rates per 1000



White  
(6.1\*)

### Disparity Index

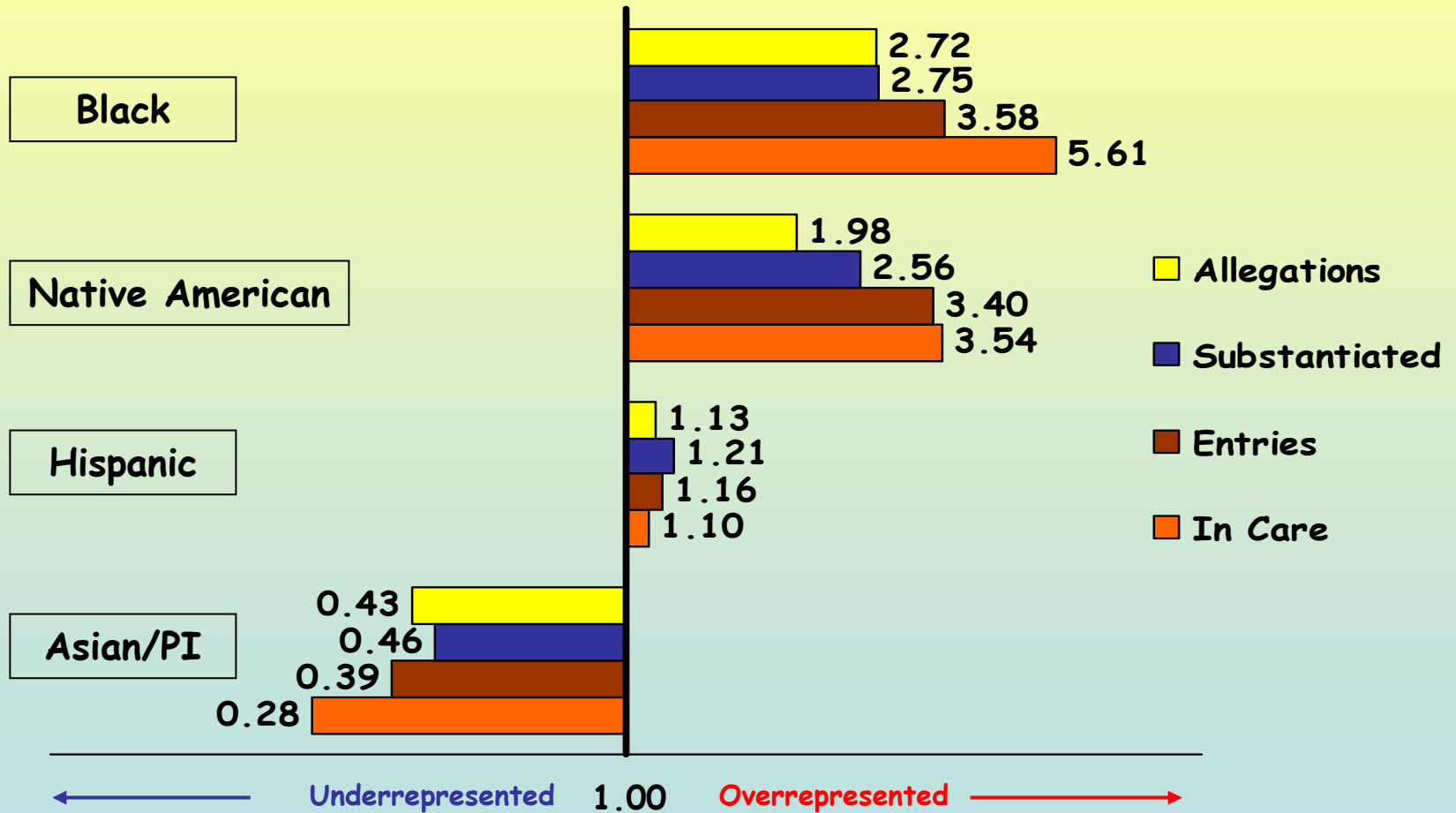
$$\frac{34.0}{6.1} = 5.6$$



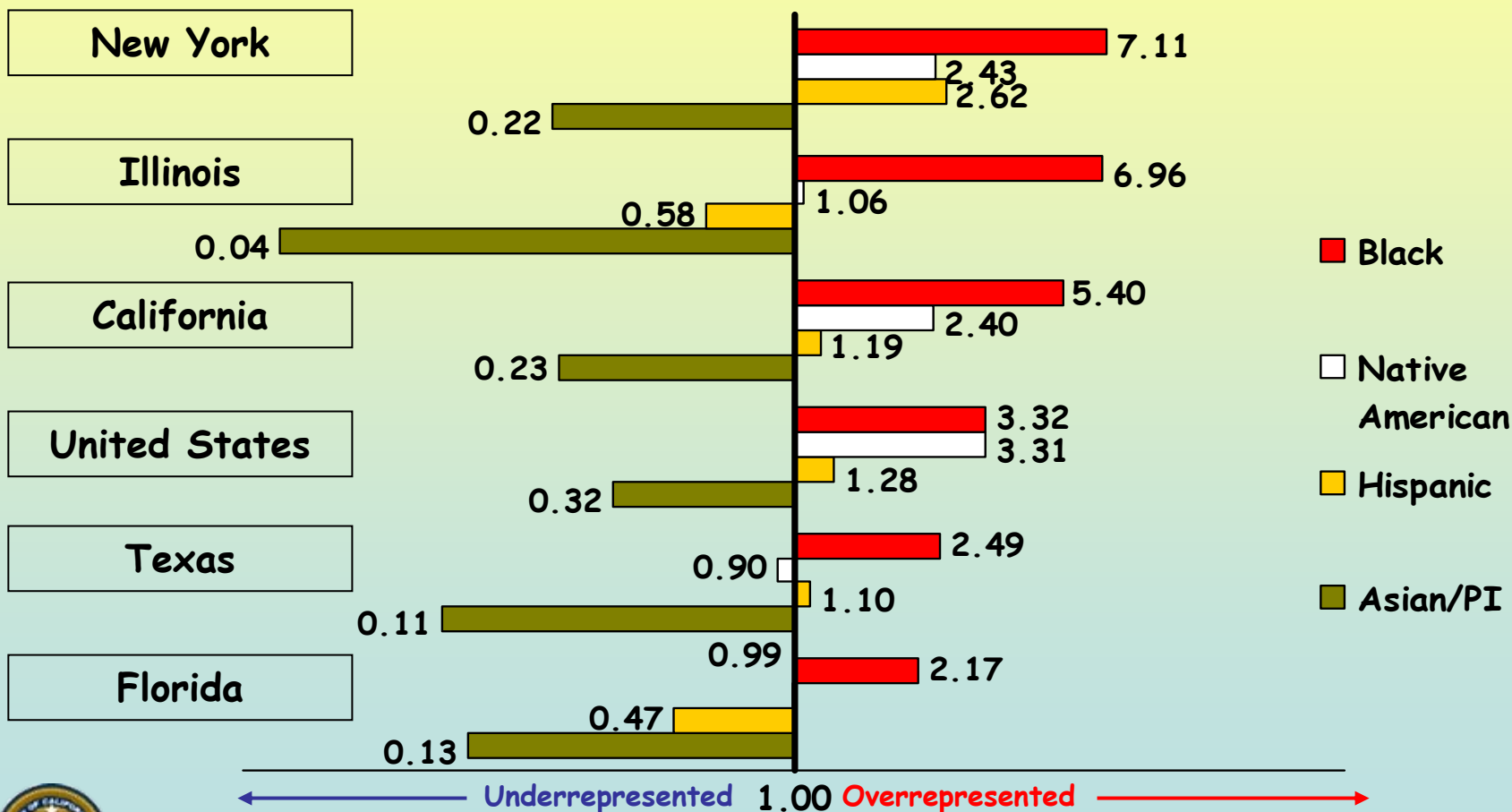


2006

# California: Racial Disparity Indices (group compared to White)



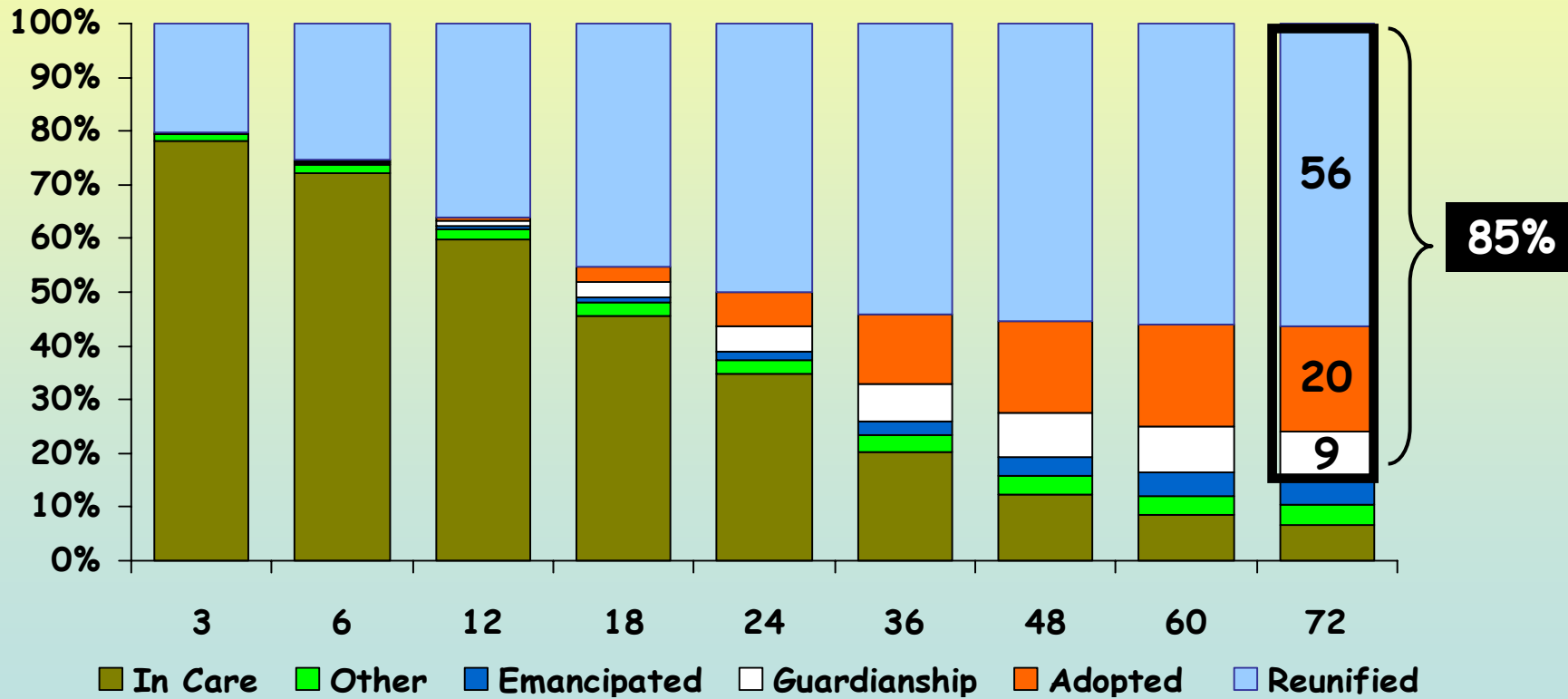
2006  
**National Data:**  
 Racial Disparity Indices  
 (group compared to White)





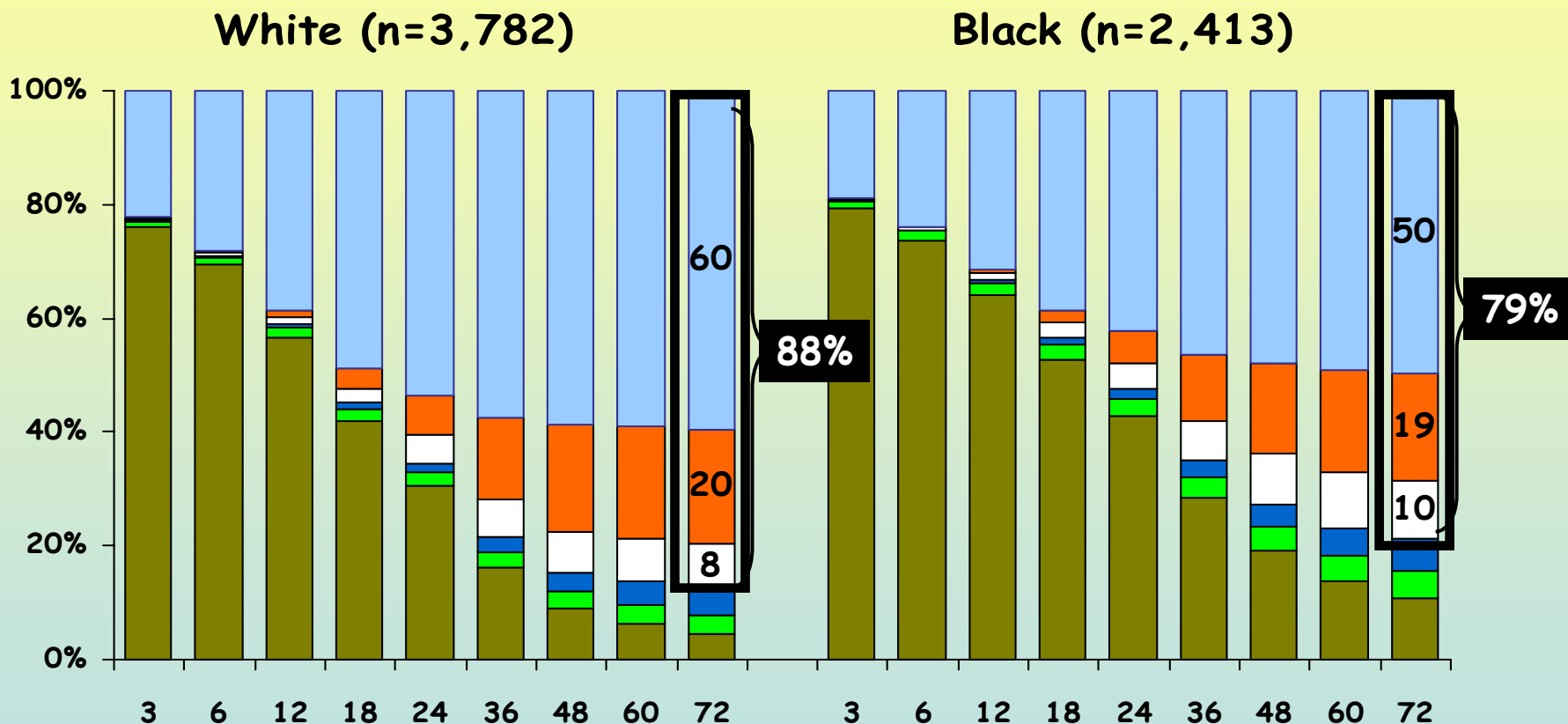
# 2000 July-December First Entries California: Percent Exited to Permanency 72 Months From Entry

N=11,699





# 2000 July-December First Entries California: Percent Exited to Permanency 72 Months From Entry



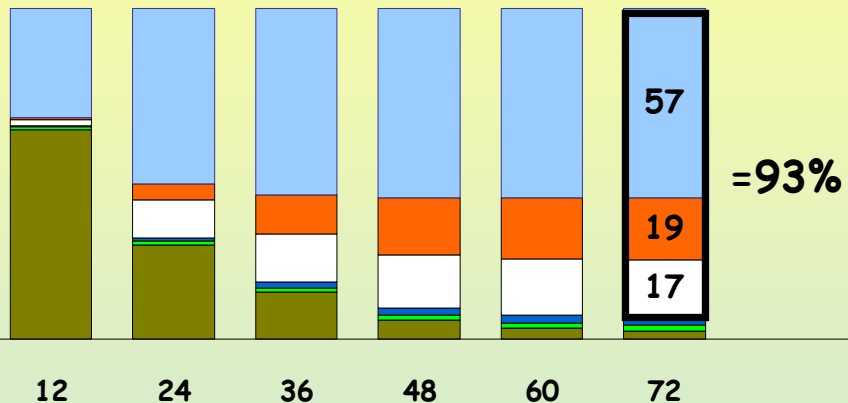


2000 July-December First Entries

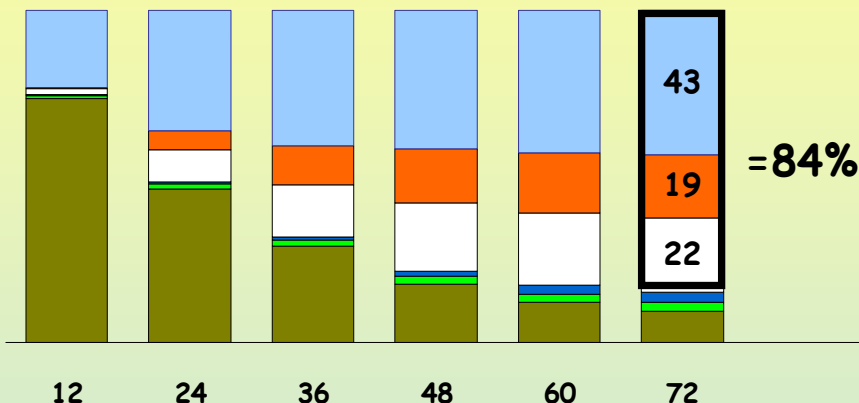
California:

Percent Exited to Permanency 72 Months From Entry  
by Relative vs. Non-Relative Placement

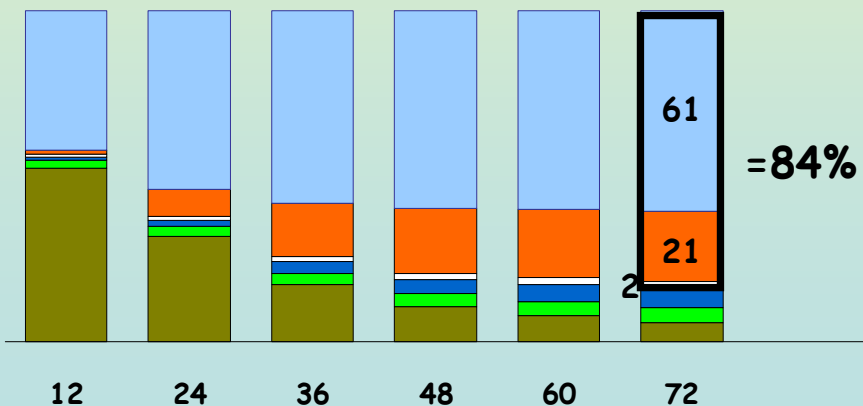
White Relative Placements (n=1,403)



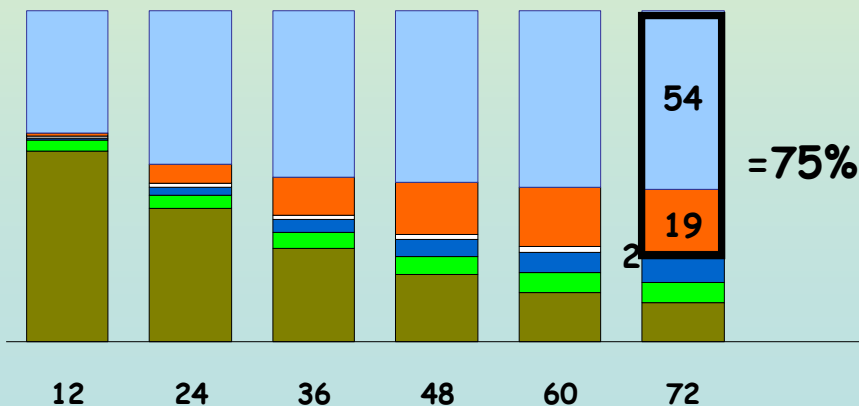
Black Relative Children Placements (n=975)



White Non-Relative Placements (n=2,379)



Black Non-Relative Placements (n=1,438)



■ In Care ■ Other ■ Emancipated ■ Guardianship ■ Adopted ■ Reunified

# Disparity Matrix: Indices (view 1)

Microsoft Excel - DisproportionalityDisparity\_dynamic\_Q307.xls

File Edit View Insert Format Tools Data Window Help

Times New Roman 10

B1 Total

		Counts		Census		Rate per 1,000	DM+	Disparity Indices (DI)							
		n	%	n	%			Compared w/ All Others	Compared w/ Black	Compared w/ White	Compared w/ Hispanic	Compared w/ Asian/PI	Compared w/ Native American	Compared w/	
1	Data	Total													
2	Disparity Indices:	Total													
3		Age 1													
4		Age 2													
5		Age 3													
6	California	Age 4													
7	2006: Q3_07 Data	Age 5													
8		Age 6													
9		Age 7													
11	System Contact Level	Race	n	%	n	%									
12	Allegations	Total	482,741	100.0	9,988,199	100.0	48.3								
13		Missing	40,438	--	0	--	--								
14		Black	67,911	15.4	607,496	6.1	111.8	2.52	2.80	1.00	2.72	2.41	6.38	1.37	
15		White	130,862	29.6	3,183,960	31.9	41.1	0.93	0.90	0.37	1.00	0.88	2.35	0.50	
16		Hispanic	222,609	50.3	4,792,446	48.0	46.4	1.05	1.10	0.42	1.13	1.00	2.65	0.57	
17		Asian/PI	17,067	3.9	973,924	9.8	17.5	0.40	0.37	0.16	0.43	0.38	1.00	0.22	
18		Native American	3,854	0.9	47,333	0.5	81.4	1.84	1.85	0.73	1.98	1.75	4.65	1.00	
19			--	%	--	%	--	--	--	--	--	--	--	--	
20	Substantiated Allegations	Total	108,331	100.0	9,988,199	100.0	10.8								
21		Missing	4,079	--	0	--	--								
22		Black	15,490	14.9	607,496	6.1	25.5	2.44	2.69	1.00	2.75	2.27	5.93	1.07	
23		White	29,516	28.3	3,183,960	31.9	9.3	0.89	0.84	0.36	1.00	0.82	2.16	0.39	
24		Hispanic	53,935	51.7	4,792,446	48.0	11.3	1.08	1.16	0.44	1.21	1.00	2.62	0.47	
25		Asian/PI	4,186	4.0	973,924	9.8	4.3	0.41	0.39	0.17	0.46	0.38	1.00	0.18	
26		Native American	1,125	1.1	47,333	0.5	23.8	2.28	2.29	0.93	2.56	2.11	5.53	1.00	
27			--	%	--	%	--	--	--	--	--	--	--	--	
28	Entries	Total	40,332	100.0	9,988,199	100.0	4.0								
29		Missing	246	--	0	--	--								
30		Black	7,609	19.0	607,496	6.1	12.5	3.12	3.62	1.00	3.58	3.09	9.12	1.05	
31		White	11,147	27.8	3,183,960	31.9	3.5	0.87	0.82	0.28	1.00	0.86	2.55	0.29	
32		Hispanic	19,429	48.5	4,792,446	48.0	4.1	1.01	1.02	0.32	1.16	1.00	2.95	0.34	
33		Asian/PI	1,337	3.3	973,924	9.8	1.4	0.34	0.32	0.11	0.39	0.34	1.00	0.12	

Notes Labels Data Disparity Indices

Ready

# Disparity Matrix: Indices (view 2)

Microsoft Excel - DisproportionalityDisparity\_dynamic\_Q307.xls

File Edit View Insert Format Tools Data Window Help

Times New Roman 10

		Counts		Census		Rate per 1,000	DM+	Disparity Indices (DI)							
		n	%	n	%			Compared w/ All Others	Compared w/ Black	Compared w/ White	Compared w/ Hispanic	Compared w/ Asian/PI	Compared w/ Native American	Compared w/	
1	Data	Total													
2	Disparity Indices:	Total													
3		Age 1													
4		Age 2													
5		Age 3													
6	California	Age 4													
7	2006: Q3_07 Data	Age 5													
8		Age 6													
9		Age 7													
10															
11	System Contact Level	Race	n	%	n	%									
28	Entries	Total	40,332	100.0	9,988,199	100.0	4.0								
29		Missing	246	--	0	--	--								
30		Black	7,609	19.0	607,496	6.1	12.5	3.12	3.62	1.00	3.58	3.09	9.12	1.05	
31		White	11,147	27.8	3,183,960	31.9	3.5	0.87	0.82	0.28	1.00	0.86	2.55	0.29	
32		Hispanic	19,429	48.5	4,792,446	48.0	4.1	1.01	1.02	0.32	1.16	1.00	2.95	0.34	
33		Asian/PI	1,337	3.3	973,924	9.8	1.4	0.34	0.32	0.11	0.39	0.34	1.00	0.12	
34		Native American	564	1.4	47,333	0.5	11.9	2.97	3.00	0.95	3.40	2.94	8.68	1.00	
35			--	%	--	%	--	--	--	--	--	--	--	--	
36	In Care on July 1, 2006	Total	74,508	100.0	9,988,199	100.0	7.5								
37		Missing	27	--	0	--	--								
38		Black	20,642	27.7	607,496	6.1	34.0	4.56	5.92	1.00	5.61	5.11	19.73	1.59	
39		White	19,283	25.9	3,183,960	31.9	6.1	0.81	0.75	0.18	1.00	0.91	3.52	0.28	
40		Hispanic	31,865	42.8	4,792,446	48.0	6.6	0.89	0.81	0.20	1.10	1.00	3.86	0.31	
41		Asian/PI	1,677	2.3	973,924	9.8	1.7	0.23	0.21	0.05	0.28	0.26	1.00	0.08	
42		Native American	1,014	1.4	47,333	0.5	21.4	2.87	2.90	0.63	3.54	3.22	12.44	1.00	
43			--	%	--	%	--	--	--	--	--	--	--	--	
44			--	%	--	%	--	--	--	--	--	--	--	--	
45			--	%	--	%	--	--	--	--	--	--	--	--	
46			--	%	--	%	--	--	--	--	--	--	--	--	
47			--	%	--	%	--	--	--	--	--	--	--	--	
48			--	%	--	%	--	--	--	--	--	--	--	--	
49			--	%	--	%	--	--	--	--	--	--	--	--	

Notes Labels Data Disparity Indices



Barbara Needell  
[bneedell@berkeley.edu](mailto:bneedell@berkeley.edu)  
510.642.1893  
510.290.6334 (pcs)



**CSSR.BERKELEY.EDU/UCB\_CHILDWELFARE**

Needell, B., Webster, D., Armijo, M., Lee, S., Dawson, W., Magruder, J., Exel, M., Zimmerman, K., Simon, V., Putnam-Hornstein, E., Frerer, K., Ataie, Y., Atkinson, L., Blumberg, R., Henry, C., & Cuccaro-Alamin, S. (2008).

